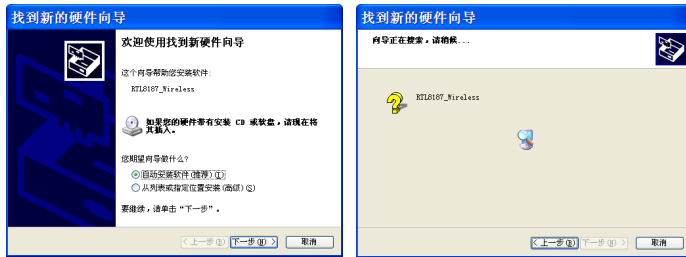


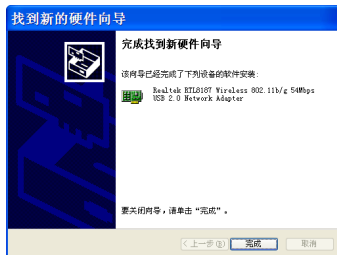
- 1.Connection products to the computer.
- 2.Insert CD-ROM.
- 3.Wait for automatic installation.



4.Next.



5.Finish.



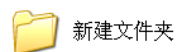
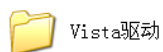
6.Open the CD-ROM.



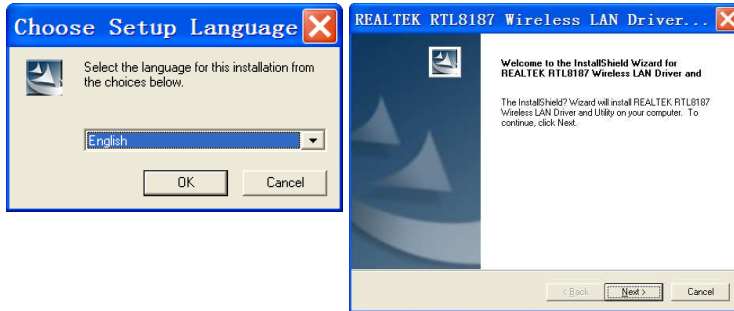
7. Open the folder.



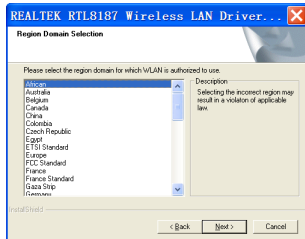
8. Choose the first folder if your computer is Vista system,or choose the second folder if it is Windows XP system.



9. No matter which folder you choose,enter and choose 'setup'.



10. Choose language.



11. Choose the first one.



12. Finish.



Now you are success of join someone else's WIFI.

